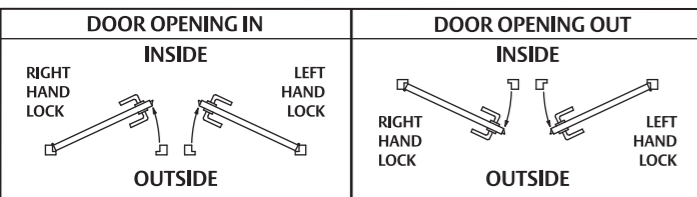


3782 SERIES MORTICE LOCK

SETTING AND OPERATING INSTRUCTIONS

P/No. 3782-221 01/16

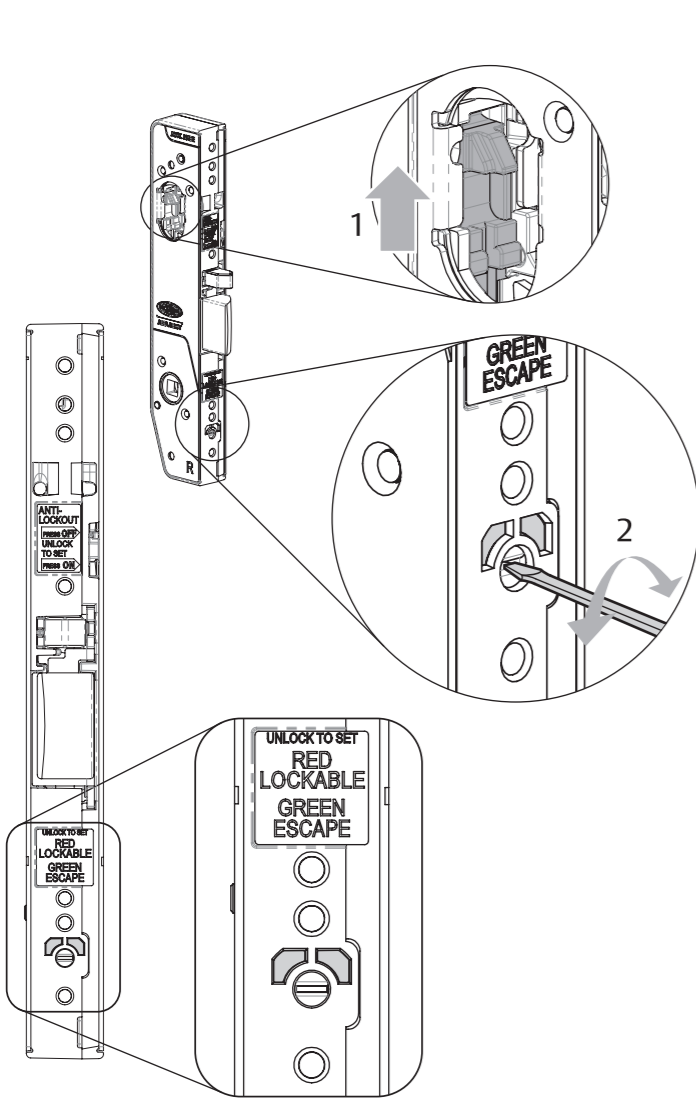
HAND OF DOOR ACCORDING TO ENGLISH PRACTICE



- Determine hand of lock required from chart above.

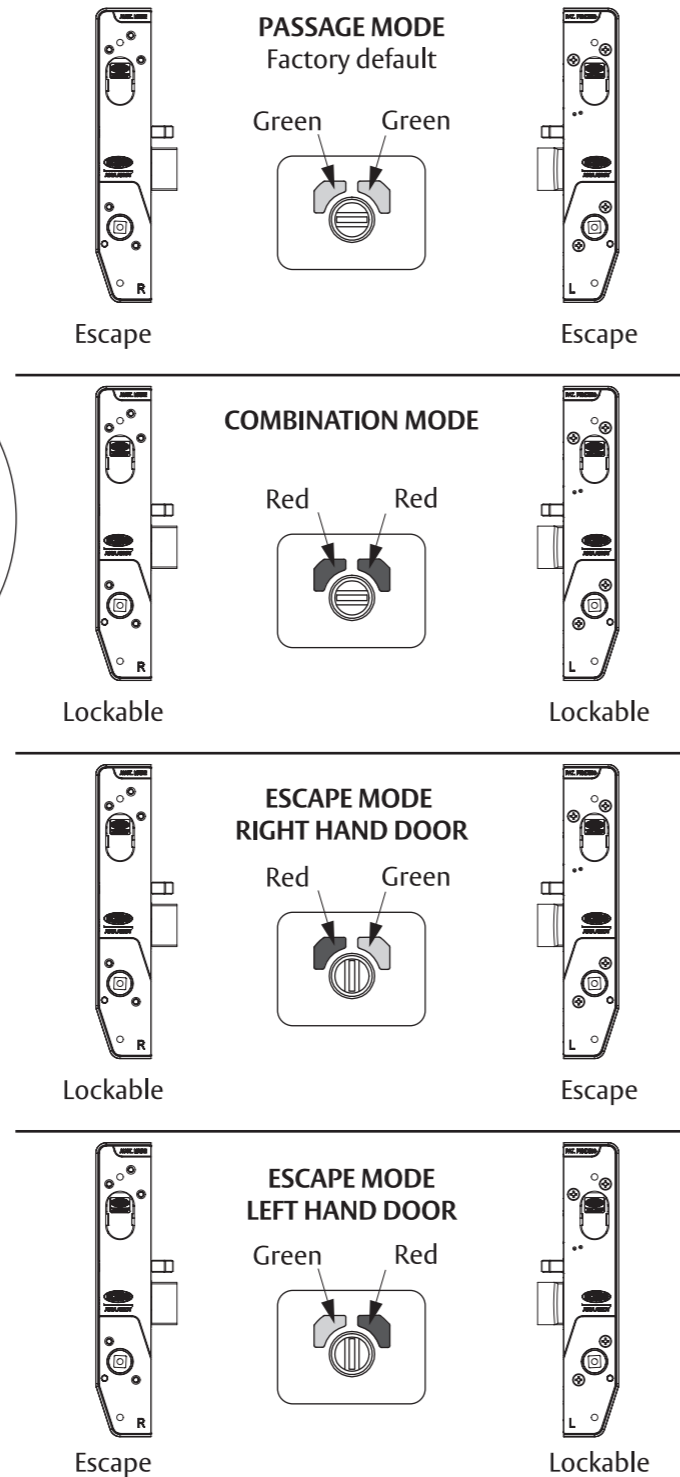
- Disregard instructions referring to features not required.
- The lock is supplied in passage mode. The anti-lockout function is de-activated.
- The lock is always hold back capable, no setting is required. Hold back can be activated at any time - unless anti-lockout is selected.
- To install the lock, refer to the **MOUNTING INSTRUCTIONS**.
- Refer to **FUNCTION CHART** on reverse of this instruction to select required settings, cams and adaptors.

A



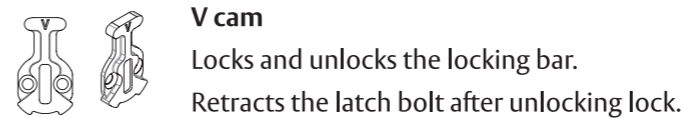
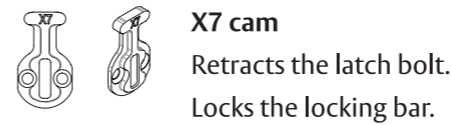
- Ensure locking bar is in the unlocked (up) position. Hubs cannot be set while lock is locked.
- Using a 4mm flat blade screwdriver, rotate the dial until the required configuration is achieved. Dial can be rotated in either direction.
- **RED** - handle is lockable. Only opened by handle when locking bar is unlocked (up).
- **GREEN** - opened by handle at all times.

HUB SETTING



B

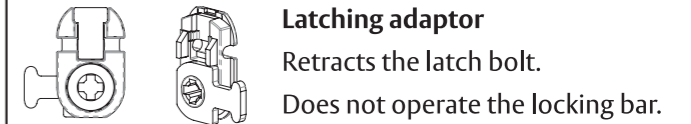
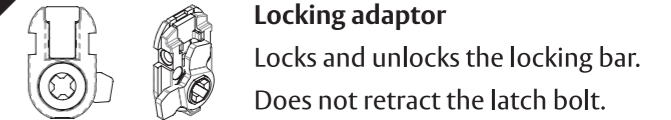
CYLINDER CAM SELECTION



- Fit the required cam to the cylinder and install into lock according to the **MOUNTING INSTRUCTIONS**.

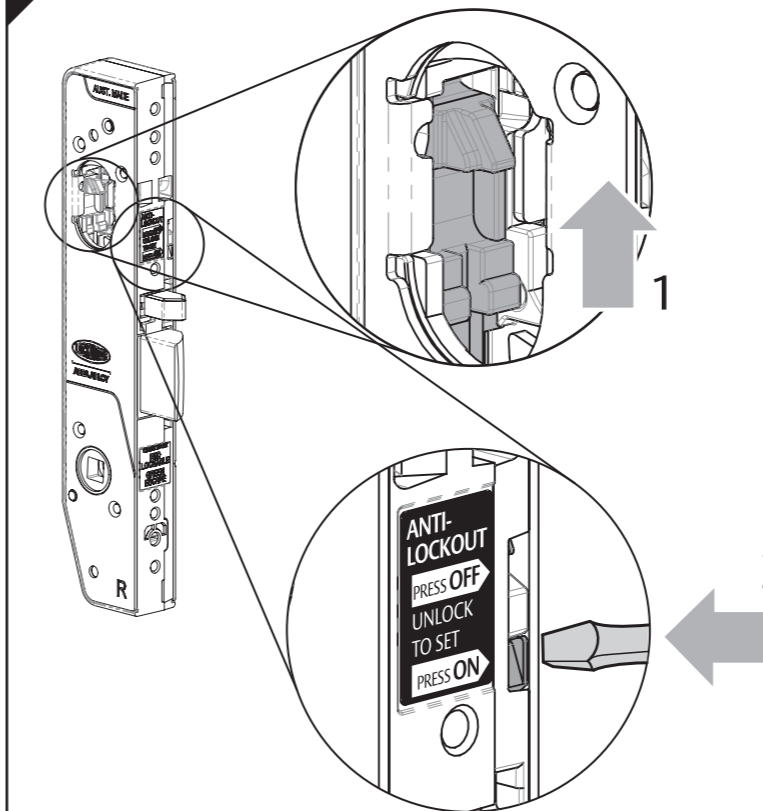
C

ADAPTOR SELECTION



- Select adaptor required and install into lock according to the **MOUNTING INSTRUCTIONS**.

D



- Ensure locking bar is in the unlocked (up) position. Anti-lockout cannot be set while lock is locked.
- To change the selection; use a 4mm flat blade screwdriver and press the switch.
- Depressed part of the switch indicates the anti-lockout selection status.

NEUTRAL LOCK
Factory default.
Lock operates as a standard lock.



ANTI-LOCKOUT LOCK
Closing the door or retracting the latch bolt unlocks the lock preventing lock out situations.

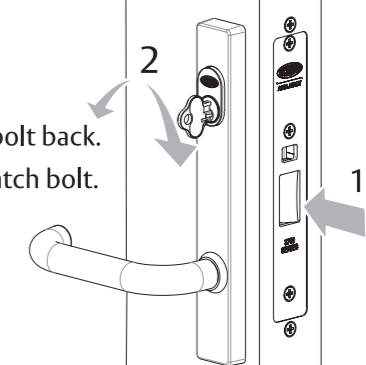


E

HOLDBACK OPERATION

- The lock is always hold back capable, no setting is required.
- Hold back can be activated at any time - unless anti-lockout is selected.
- **To activate** : Depress latch bolt and lock locking bar.
- **To de-activate** : Unlock locking bar.

Lock to hold latch bolt back.
Unlock to release latch bolt.



Nightlatches

Function description	External cam or adaptor	Hub setting	Anti-lockout selection	Locking bar position	Internal cam or adaptor
3780-T Nightlatch with turn <i>Turn knob inside.</i> <i>Inside :</i> Opened by turn knob.			OFF	Locked ←	
3780X- Nightlatch with cylinder <i>Single cylinder.</i> <i>Outside :</i> Opened by key.			OFF	Locked ↓	
3780XT Nightlatch with cylinder and turn <i>Cylinder and turn knob.</i> <i>Outside :</i> Opened by key. <i>Inside :</i> Opened by turn knob.			OFF	Locked ←	
3780XX Nightlatch with double cylinder <i>Double cylinder.</i> <i>Outside :</i> Opened by key. <i>Inside :</i> Opened by key.			OFF	Locked ↓	

Escape locks

Function description	External cam or adaptor	Hub setting	Anti-lockout selection	Locking bar position	Internal cam or adaptor
3782-- Escape lock <i>Outside :</i> Handle always rigid. <i>Inside :</i> Opened by handle at all times.			OFF	Locked ←	
3782-T Escape privacy lock <i>Emergency button and turn knob.</i> <i>Outside :</i> Opened by handle when unlocked. Emergency button locks or unlocks outside handle - operated by screwdriver or coin. <i>Inside :</i> Opened by handle at all times. Turn knob locks or unlocks outside handle.			OFF	Selectable ↔	
3782X- Key entry escape lock <i>Single cylinder.</i> <i>Outside :</i> Opened by key at all times. Handle always rigid. <i>Inside :</i> Opened by handle at all times.			OFF	Locked ←	
3782XT Key entry escape lock with turn <i>Cylinder and turn knob.</i> <i>Outside :</i> Opened by key at all times. Opened by handle when unlocked. Key locks outside handle. <i>Inside :</i> Opened by handle at all times. Turn knob locks or unlocks outside handle.			OFF	Selectable ↔	
3782V- Anti-vandal escape lock # <i>Single cylinder.</i> <i>Outside :</i> Opened by handle when unlocked. Key locks or unlocks outside handle and retracts bolt after unlocking lock. <i>Inside :</i> Opened by handle at all times			OFF	Selectable ↔	
3782VT Anti-vandal escape lock with turn <i>Cylinder and turn knob.</i> <i>Outside :</i> Opened by handle when unlocked. Key locks or unlocks outside handle and retracts bolt after unlocking lock. <i>Inside :</i> Opened by handle at all times. Turn knob locks or unlocks outside handle.			OFF	Selectable ↔	
3782-TA Anti-lockout escape privacy lock * <i>Emergency button and turn knob.</i> <i>Outside :</i> Opened by handle when unlocked. Emergency button locks or unlocks outside handle - operated by screwdriver or coin. <i>Inside :</i> Opened by handle at all times. Turn knob locks or unlocks outside handle.			ON	Selectable ↔	
3782VTA Anti-lockout anti-vandal escape lock & turn * <i>Cylinder and turn knob.</i> <i>Outside :</i> Opened by handle when unlocked. Key locks or unlocks outside handle and retracts bolt after unlocking lock. <i>Inside :</i> Opened by handle at all times. Turn knob locks or unlocks outside handle.			ON	Selectable ↔	

Passage latch

Function description	External cam or adaptor	Hub setting	Anti-lockout selection	Locking bar position	Internal cam or adaptor
3784 Passage latch <i>Outside :</i> Opened by handle at all times. <i>Inside :</i> Opened by handle at all times.			OFF	Unlocked →	

Combination locks

Function description	External cam or adaptor	Hub setting	Anti-lockout selection	Locking bar position	Internal cam or adaptor
3784-T Privacy lock <i>Emergency button and turn knob.</i> <i>Outside :</i> Opened by handle when unlocked. Emergency button locks or unlocks both handles - operated by screwdriver or coin. <i>Inside :</i> Opened by handle at all times. Turn knob locks or unlocks both handles.			OFF	Selectable ↔	
3784XX Key entry double cylinder lock <i>Double cylinder.</i> <i>Outside :</i> Opened by key at all times. Handle always rigid. <i>Inside :</i> Opened by key at all times. Handle always rigid.			OFF	Locked ↓	
3784XV Key entry lock with internal cylinder # <i>Double cylinder.</i> <i>Outside :</i> Opened by key at all times. Opened by handle when unlocked. Key locks both handles. <i>Inside :</i> Opened by handle when unlocked. Key locks or unlocks both handles and retracts bolt after unlocking lock.			OFF	Selectable ↔	
3784VV Anti-vandal lock with internal cylinder # <i>Double cylinder.</i> <i>Outside :</i> Opened by handle when unlocked. Key locks or unlocks both handles and retracts bolt after unlocking lock. <i>Inside :</i> Opened by handle when unlocked. Key locks or unlocks both handles and retracts bolt after unlocking lock.			OFF	Selectable ↔	
3784VT Anti-vandal lock with turn <i>Cylinder and turn knob.</i> <i>Outside :</i> Opened by handle when unlocked. Key locks or unlocks both handles and retracts bolt after unlocking lock. <i>Inside :</i> Opened by handle when unlocked. Key locks or unlocks both handles and retracts bolt after unlocking lock.			OFF	Selectable ↔	
3784-TA Anti-lockout privacy lock * <i>Emergency button and turn knob.</i> <i>Outside :</i> Opened by handle when unlocked. Emergency button locks or unlocks both handles - operated by screwdriver or coin. <i>Inside :</i> Opened by handle at all times. Turn knob locks or unlocks both handles.			ON	Selectable ↔	
3784VVA Anti-lockout anti-vandal lock & cylinder * <i>Double cylinder.</i> <i>Outside :</i> Opened by handle when unlocked. Key locks or unlocks both handles and retracts bolt after unlocking lock. <i>Inside :</i> Opened by handle when unlocked. Key locks or unlocks both handles and retracts bolt after unlocking lock.			ON	Selectable ↔	

* **Anti-lockout lock** - closing the door or retracting the latch bolt unlocks the lock preventing lock out situations.

Hold back lock - Latch bolt can be held within the lock. Whilst hold back is achievable in all configurations where anti-lockout is not engaged, only these functions are recommended for use in hold back applications