

# AerWave (Touchless + Wireless Switch)

## Instruction Manual



AerWave is a high-performance touch-free, wireless switch. It is designed to activate automatic doors and similar devices by detecting hand or object movement without physical contact. For the safe and accurate use of this product, please read this instruction manual carefully.

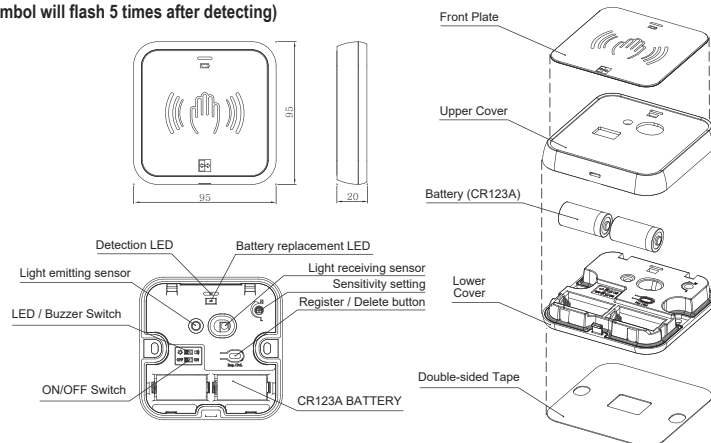


## 1 Product components and specification

Components		
AerWave	1EA	
Double-sided Tape	1EA	
Battery (CR123A)	2EA	
Fixing Screw (4*16)	2EA	
Front Plate (2 types)	1EA (Hand and Wheelchair)	
User Manual	1Copy	
Specifications		
Power Supply	DC3V	
Technology	Infrared - Reflective	
Detection Range / Method	1~15cm ±5cm / LED or BUZZER	
Detecting Target	Hand or Object (Touchless) ※ Detecting distance varies depending on the color of the object	
Wireless transmission distance	<10m (2m or less when attached a metal structure)	
Response Time	<1sec.	
Battery Life	Approx. 12 months (500 usages per day)	
Current Consumption	<0.5mWh	
Operating Temp / Humidity	-20 °C ~ 50 °C / 0~90%	
IP Rating	IP65	
Dimensions	95 x 95 x 20 mm	

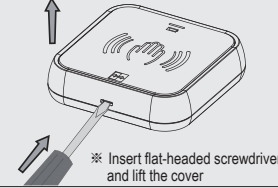
## 2 General Information

- LED Red : Detecting
- ▭ LED Red : Replace battery  
(Battery symbol will flash 5 times after detecting)

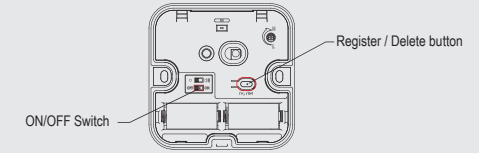


## 3 Installation Guide

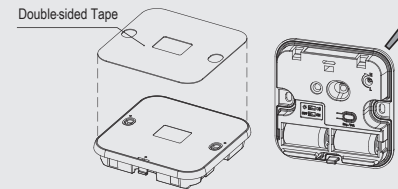
**1** If the protective film is not removed from the Front Plate it may interfere with the function of this product. Therefore remove the protective film from the Front Plate and disassemble the AerWave cover using a screwdriver.



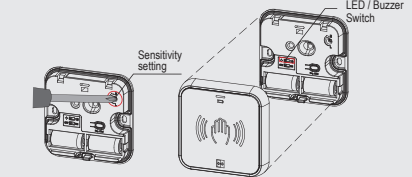
**2** Install batteries and turn the AerWave ON. Register the transmitter with a receiver using the Register/Delete button (See section 4).



**3** Attach the Lower Cover to where you want to install the sensor using the Double-sided Tape and/or screws provided.

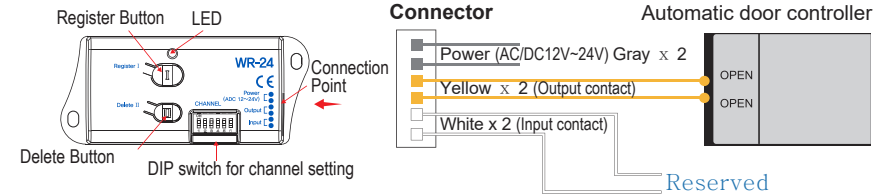


**4** Set the detection distance as required by adjusting the Sensitivity setting using a screwdriver. Select whether you want detection to be indicated with an LED or a Buzzer, then attach the Upper Cover to the sensor.



## 4 Registering the AerWave Transmitter with the WR-24 Receiver (sold separately)

※ Up to 10 AerWave sensors can be registered with one WR-24 receiver.



※ Make sure to check that all dip switches are in the down (OFF) position before proceeding

### 1. Registering an AerWave Transmitter with a WR-24 Receiver

- Connect power to the WR-24 receiver.
- Press the Register/Delete button on the AerWave switch for 3 seconds whilst simultaneously pressing the Register I button on the WR-24 receiver.
- The red LED will flash on the WR-24 to indicate registration.

### 2. Deleting an AerWave Transmitter from a WR-24 Receiver

- Connect power to the WR-24 receiver.
- Press the Register / Delete button on the AerWave switch for 3 seconds whilst simultaneously pressing the Delete II button on the WR-24 receiver.
- The blue LED will flash on the WR-24 to indicate deletion.

### 3. Deleting all AerWave Transmitters from a WR-24 Receiver

- Press the Register I button and Delete II button on the WR-24 receiver at the same time for 5 seconds.
- The blue LED will flash three times indicating that all registered AerWave transmitters have been deleted.

## 5 Precautions

- 1** Remove the protective film attached to the front plate
- 2** Do not install in places exposed to strong sunlight
- 3** Avoid moving objects in front of the sensor
- 4** Do not install in humid areas

