

# AHS Smart Relay

Bluetooth, Wi-Fi, 433Mhz

Model: TYWR 7-32V RF



## Parameters:

Input voltage: DC/AC 7V~32V /USB5V  
 Max.Current:2200W/10A  
 Wi-Fi Standard:Wi-Fi 2.4Ghz b/g/n+Bluetooth  
 Working temperature: -20°C~70°C  
 Size: 69\*41\*20mm

## Checklist before using the device

- Your smart phone or tablet has connected to a 2.4g WiFi with internet.
- You need to enable Bluetooth of the phone.
- You have the correct WiFi PWD.
- Your smart phone or tablet must have access to APP store,Google play.
- Your router is MAC-open.

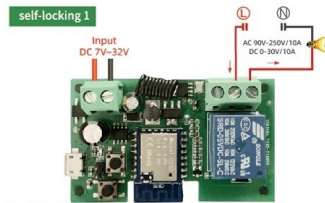
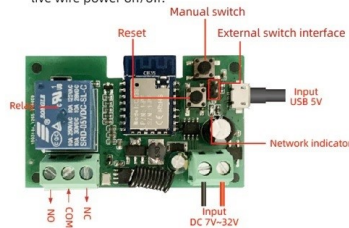
## User Guide

- You can download the App by searching "Tuya Smart" in mobile app stores or scanning the following QR code



- Register an Tuya Smart account.
- If you have Tuya Smart account, just login.
- Power on.

ON/OFF operating principle:  
 The connected appliances work/stop through live wire power on/off.



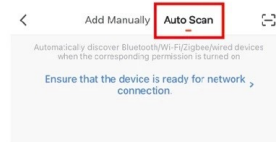
## Add devices

- Reset the device first:

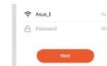
if the network indicator blinking fast (0.5s/time) , skip the reset step.

- Power on
- hold down the Reset button for 5 seconds, until network indicator(red light)blinking fast(0.5s/time).

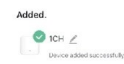
- Clicking **+** in the top right corner on tuya smart app, then click "Auto Scan" ,wait a few seconds, After the devices are found,Click "Next"



- Select a 2.4GHz Wi-Fi network and enter your password.



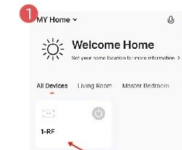
- Name your device.



- When the network is disconnected, the switch will automatically switch to the Bluetooth control of the phone.

- Click the on/off buttons on the APP can control device,Manual control switch also can be display real-time on the APP.

## APP Function



Tip here to enter the full function operation interface.



Rename /Offline Notification /Third-party Control /Share Device /Create Group /Remove Device

Countdown /Schedule/ Circulate/Random/Inching.

/Relay status /Switch type set /RF remote control setup

## Remote control matches the code Matching:

- Figure 2 interface, click setting> RF remote control setup>Add.
- When the prompt interface pops up,then long press the remote control button you want to match
- loosen the remote control buttons, matching success.
- Added successfully, assign the remote control buttons to the switches that need to be controlled



## TROUBLESHOOTING Solutions for the failure of product matching and offline:

Enter the homepage of App,click the icon in the lower right corner of the interface to enter.

