

SX EX BASIC MAGNETIC CONTACT SX-ID-P2211C

*PRODUCT CODE BASED ON A 5M CABLE PACKAGE



The SX EX BASIC MAGNETIC CONTACT is a member of our unique SX product family, which has been specifically designed for use in hazardous (Ex) environments. The certified device works with either our door controller and access products or with third party ACU systems to provide a highly effective solution for Door status monitoring / access control in Ex classified hazardous areas Zones 1, 2, 21 & 22.

FEATURES/DOCUMENTATION

The SX EX BASIC MAGNETIC CONTACT comprises of a certified magnetically actuated changeover read switch and matching magnet. The SX Magnetic Contact is provided as standard with a documentation pack including Operations, Installation & Maintenance Guide including mounting templates and copies of all appropriate certifications.

APPROVALS

- ExVeritas 18ATEX0407X
- IECEx EXV 18.0024X

ADDITIONAL CONFIGURATIONS

- *Extended Range: **-ER**
- **Roller Door: **-RD**

(Add above **Bold** marking to Part Number to Denote additional configuration).

Example 1: Extended Range SX-ID-P2211XC-ER

Example 2: Roller Door SX-ID-P2211XC-RD

SIZE, WEIGHT AND CONSTRUCTION

- Contact: 90 x 25 x 20mm (HxWxD)
- Magnet: 80 x 10 x 20mm (HxWxD)
- Approx. Weight: 1Kg (including 5m Cable)
- 316 Stainless Steel

MOUNTING DETAILS

- **Contact Unit to Mounting Plate** (2 x M3 DIN 912 Mounting Holes)
- **Mounting Plate** (2 x M4 DIN 7991 Mounting Holes)
- **Magnet** (2 x M3 DIN 912 Mounting Holes)
- **Connections** (M3 External Earth Point)

AMBIENT TEMP. RANGE

- -30°C...+55°C

IP PROTECTION

- IP 67 (1m for 30 Minutes)

SWITCHING ELECTRICAL CHARACTERISTICS

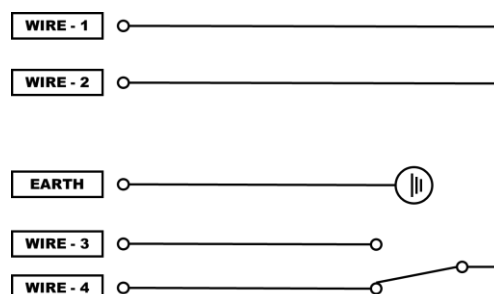
- Max. 0.5A
- Max. 5W

OPERATION LIFE CYCLES

- >10⁶ Operations (Electrical)

CABLE CORES

- 1 – Common
- 2 – Loop Common
- 3 – NO
- 4 – NC
- G/Y – Internal Earth
(5 Core Braid protected Multi-Core Cable Core Size 0.5mm²)

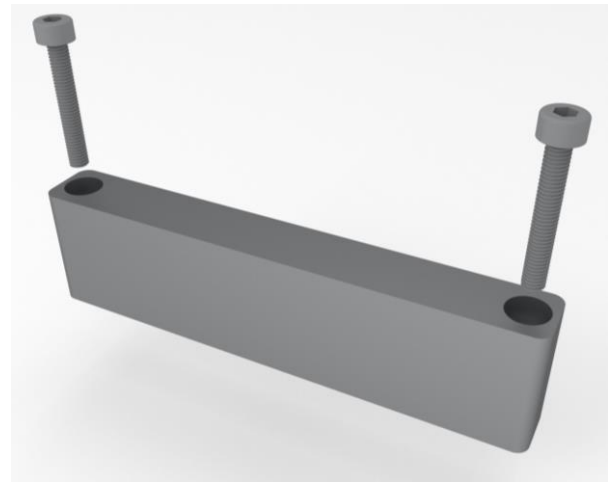
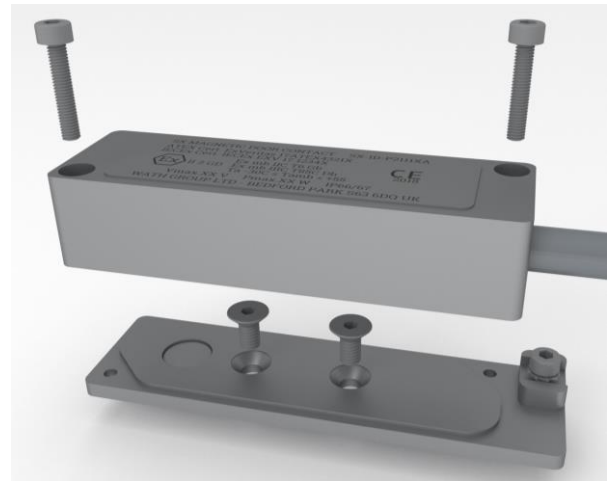


***USER CABLING OPTIONS**

- **5m**
(Part No. SX-ID-P22111C)
- **10m**
(Part No. SX-ID-P22112C)
- **15m**
(Part No. SX-ID-P22113C)
- **20m**
(Part No. SX-ID-P22114C)
- **25m**
(Part No. SX-ID-P22115C)
- **30m**
(Part No. SX-ID-P22116C)
- **50m**
(Part No. SX-ID-P22117C)
- **75m**
(Part No. SX-ID-P22118C)
- **100m**
(Part No. SX-ID-P22119C)

EX MARKINGS / CERTIFICATES

- Ex II 2G Ex mb IIC T6 Gb
- Ex II 2D Ex mb IIIC T85°C Db
- IECEx Ex mb IIC T6 Gb
- IECEx Ex mb IIIC T85°C Db

**2-YEAR STANDARD WARRANTY.**

Product warranty begins at the point of invoice.

If a defect is discovered during the warranty period, it is the customer's responsibility to return the unit to SecurEx before the end of this warranty period.

SecurEx reserves the right for a full product inspection.

SecurEx reserves the right to request evidence for correct installation. Incorrect installation of the product will result in the warranty becoming void.

SecurEx product warranty covers technical and/or safety issues. Cosmetic damages will not be covered under warranty unless related to technical and/or safety issues.

© SECUREX TECHNOLOGY 2023.

NOTE: SECUREX OPERATES UNDER A POLICY OF CONTINUAL PRODUCT IMPROVEMENT.

SPECIFICATIONS MAY CHANGE WITHOUT NOTICE.

V2.0        

SecurExTM
Technology Limited

SecurEx Technology Ltd
Bedford Park
258 Barnsley Road
Wath-upon-Dearne
ROTHERHAM S63 6DQ

T: +44 (0) 1709 352301
E: info@securex.technology
W: www.SecurEx.Technology