

SX EX ELECTROMAGNETIC LOCK

INSTALLATION GUIDE (IG) FOR L & Z BRACKET KITS

**PART NOs: SX-LS-M70101A
SX-LS-M70201A**



ABOUT SECUREX

SECUREX TECHNOLOGY, IS A SPECIALIST SECURITY AND SAFETY SOLUTIONS PROVIDER

Supplying solutions for use in both Safe & Hazardous Areas (Zones 1 & 2, 21 & 22), we work with the very best security industry partners to provide the ultimate solutions for hazardous areas.

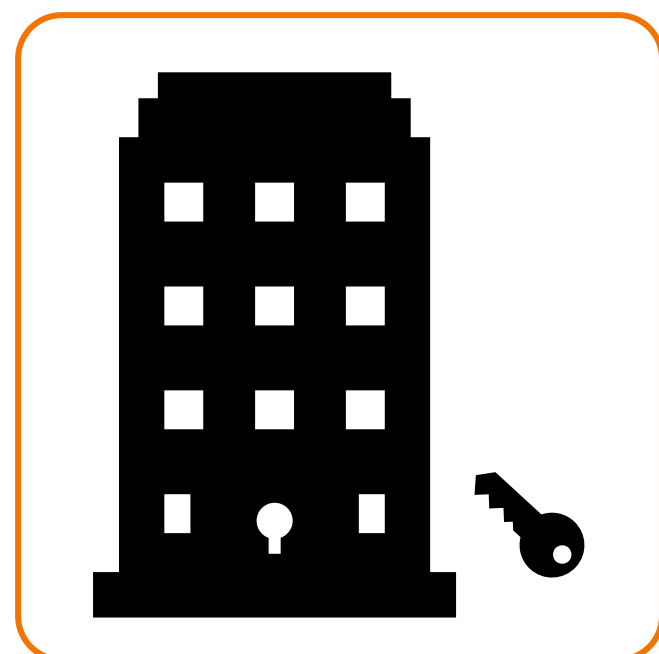
SecurEx offer a comprehensive range of high quality products supplied either as individual components or as matched building blocks of a complete bespoke solution.

Products typically are CE, ATEX, IECEx and/or UL certified for use in various gas and dust environments (see individual certifications). Wherever there is a hazardous area, we offer a solution. Our technology finds a home in diverse market sectors including:

OIL & GAS, PETROCHEMICAL, CHEMS & PHARMS, UTILITIES, FOOD, MILITARY, GOVERNMENT, BEVERAGE & DISTILLERIES, ETC.



LOCKING SOLUTIONS



ACCESS CONTROL



INTRUDER DETECTION



ALARM SYSTEMS



ACCESSORIES

INTRODUCTION

The SX EX ELECTROMAGNETIC LOCK (also known as the SX Ex Maglock) is a member of the unique SecurEx SX product family which has been specifically designed for use in harsh hazardous (Ex) environments.

This unique certified device works with both our door controller and access products or with third party ACU systems to provide a highly effective security solution for access control in Ex classified hazardous areas Zones 1, 2, 21 & 22.

The unique SX Ex Electromagnetic Door Lock has been specifically designed to be a true 'Ex Certified' Security Locking product. The wide variety of configurations available for this locking system make it particularly useful when used as part of an integrated access control solution where it can provide both enhanced safety and security for personnel.

THE L & Z BRACKET KITS

Our L & Z Bracket Kits are designed to facilitate installation of the SX Ex Electromagnetic Door Lock in a safe approved manner.

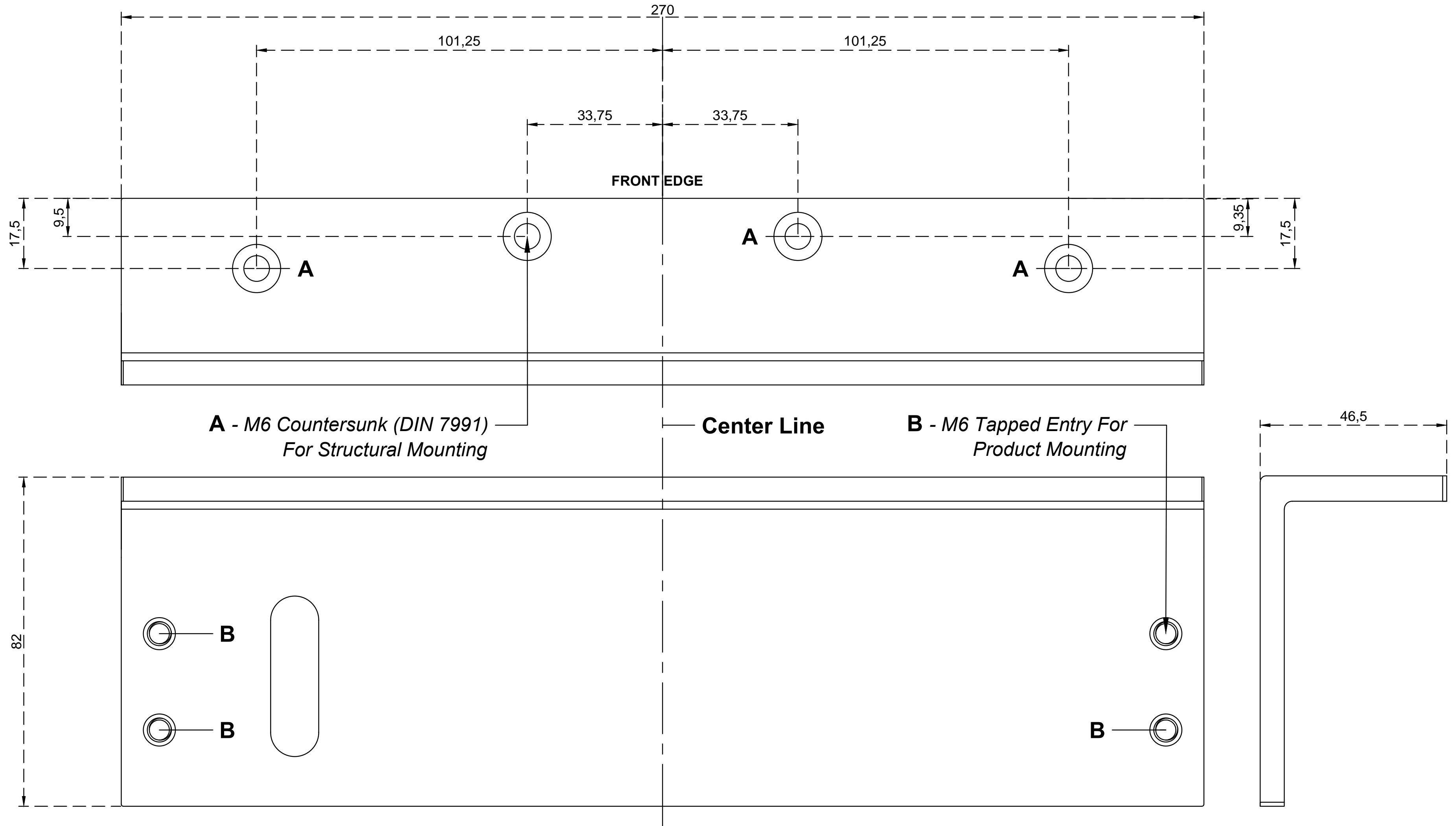
For outward opening doors – Use L Bracket Kit - P/N SX-LS-M70101A

A common mounting arrangement for outward opening doors is for the magnetic lock to be fitted neatly beneath the door frame with the Armature Plate being fitted directly to the door which then closes directly onto the lock. This requires our optional custom L bracket. In the case of Grade 3 product versions, the 'I' security plate is first mounted to the L plate (positioned behind the lock), and then the lock itself is mounted.

For inward opening doors – Use Z Bracket Kit - P/N SX-LS-M70201A

A typical mounting arrangement for inward opening doors is for the magnetic lock to be fitted directly to the outside face of door frame with the Armature Plate being stepped off of and up from the door to close directly onto the lock. This arrangement requires our optional custom Z bracket.

L BRACKET GA

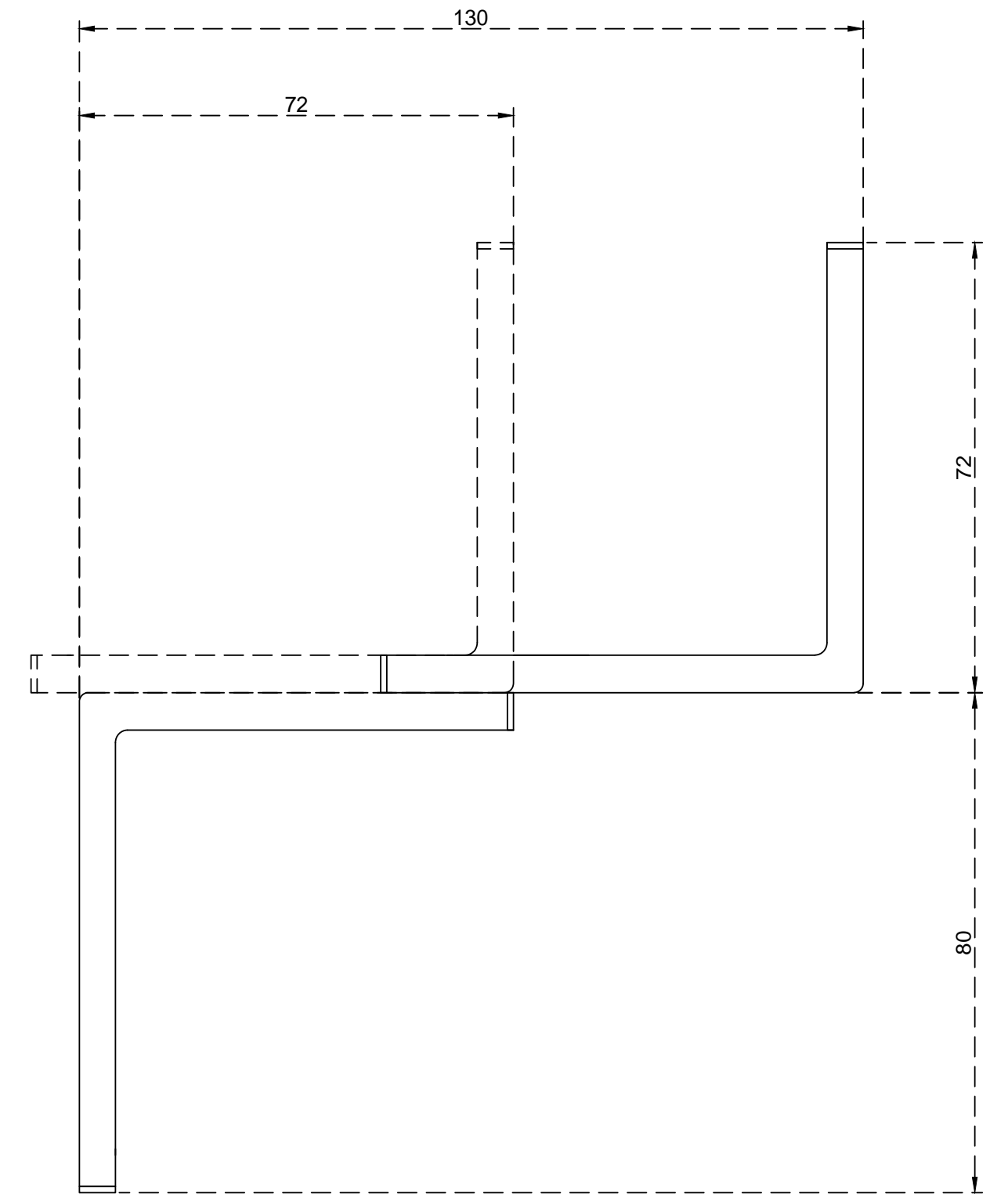
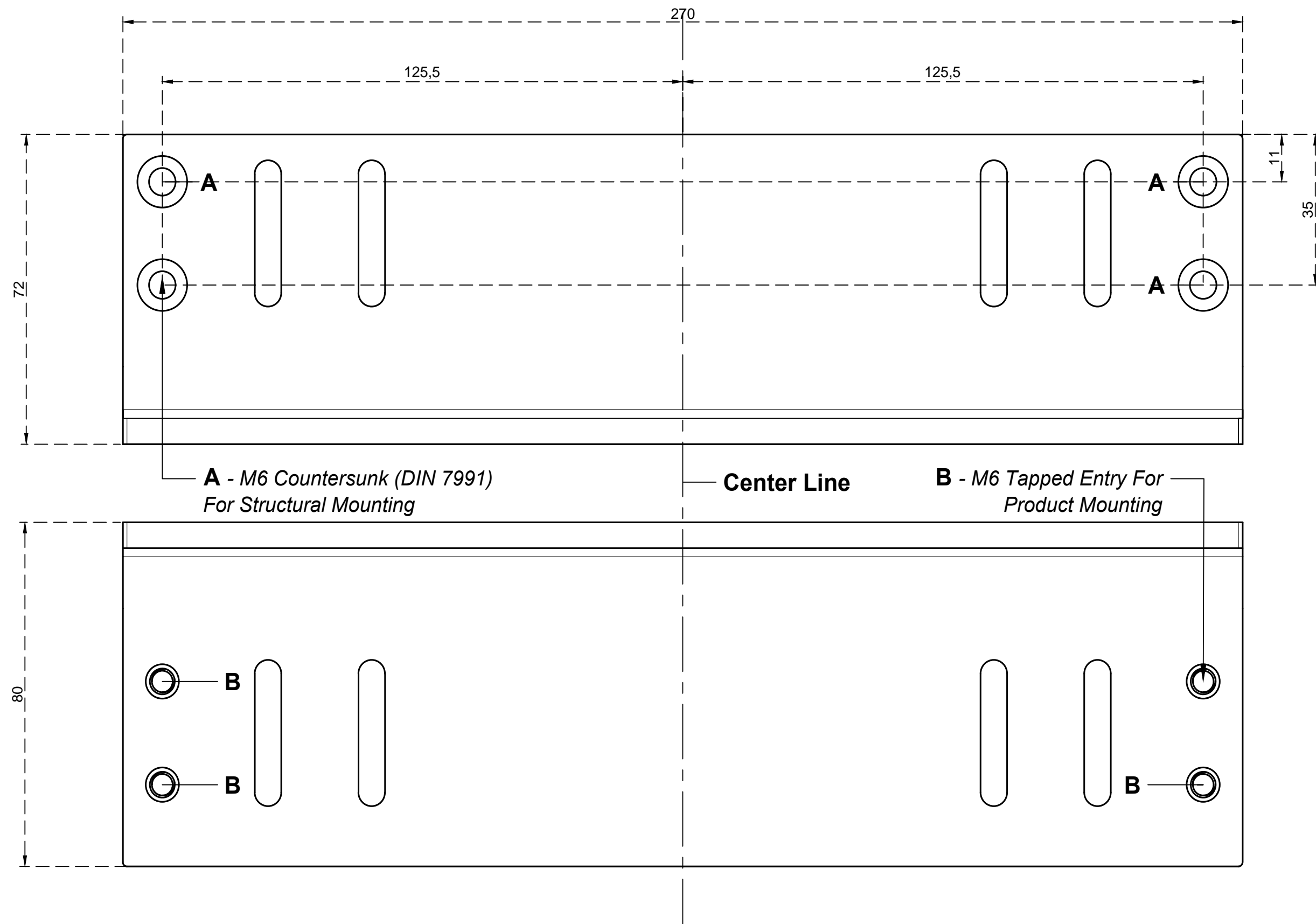


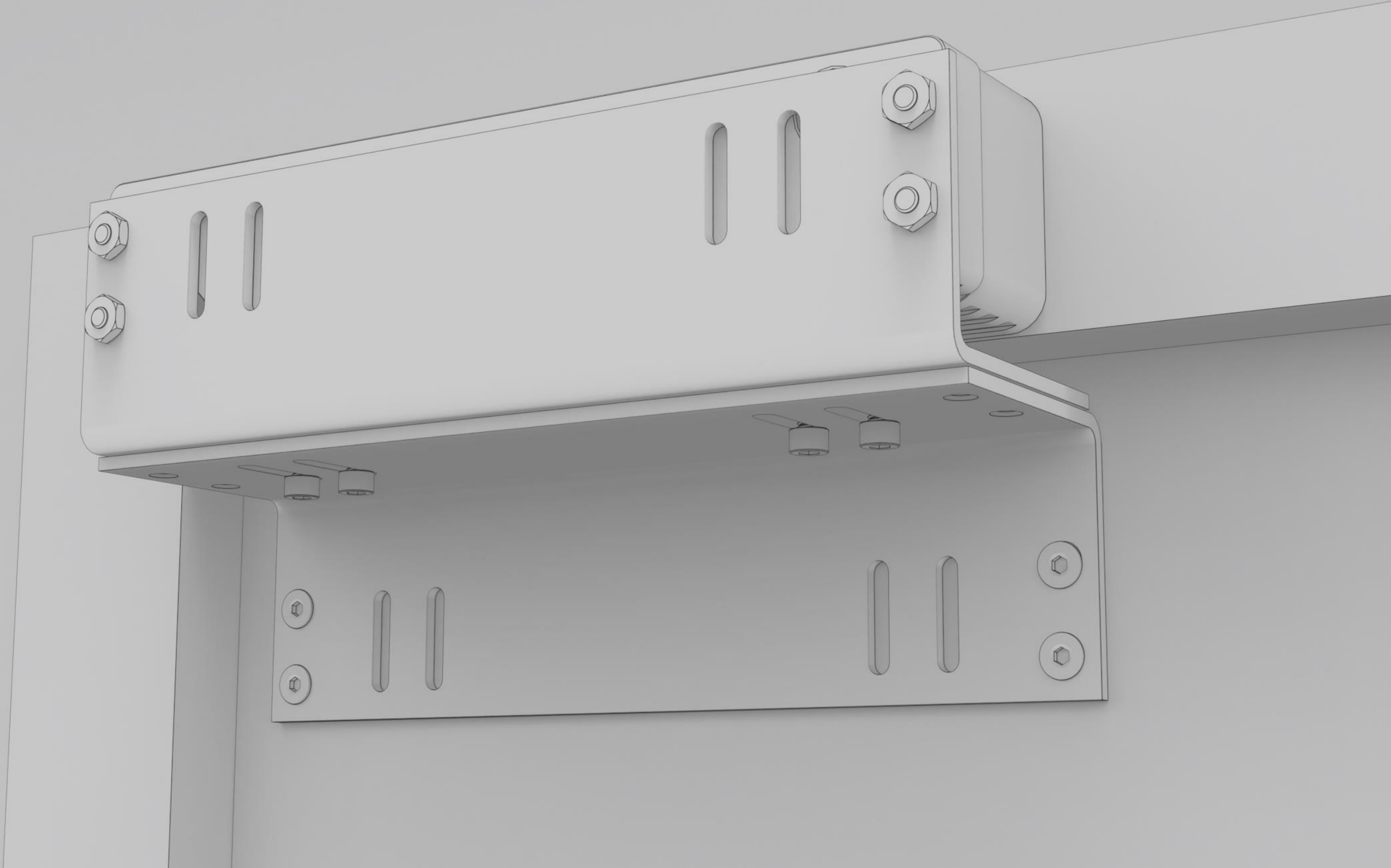






Z BRACKET GA





MOUNTING KIT CONTENTS

L Bracket Kit - P/N SX-LS-P70101A

Comprises of a 304* Stainless Steel L bracket which is designed to allow the lock to be neatly mounted under the door frame whilst the receiver plate is directly mounted to the door. Due to common mounting points this can also be used to mount the armature (keeper) plate in an alternate mounting arrangement if required.

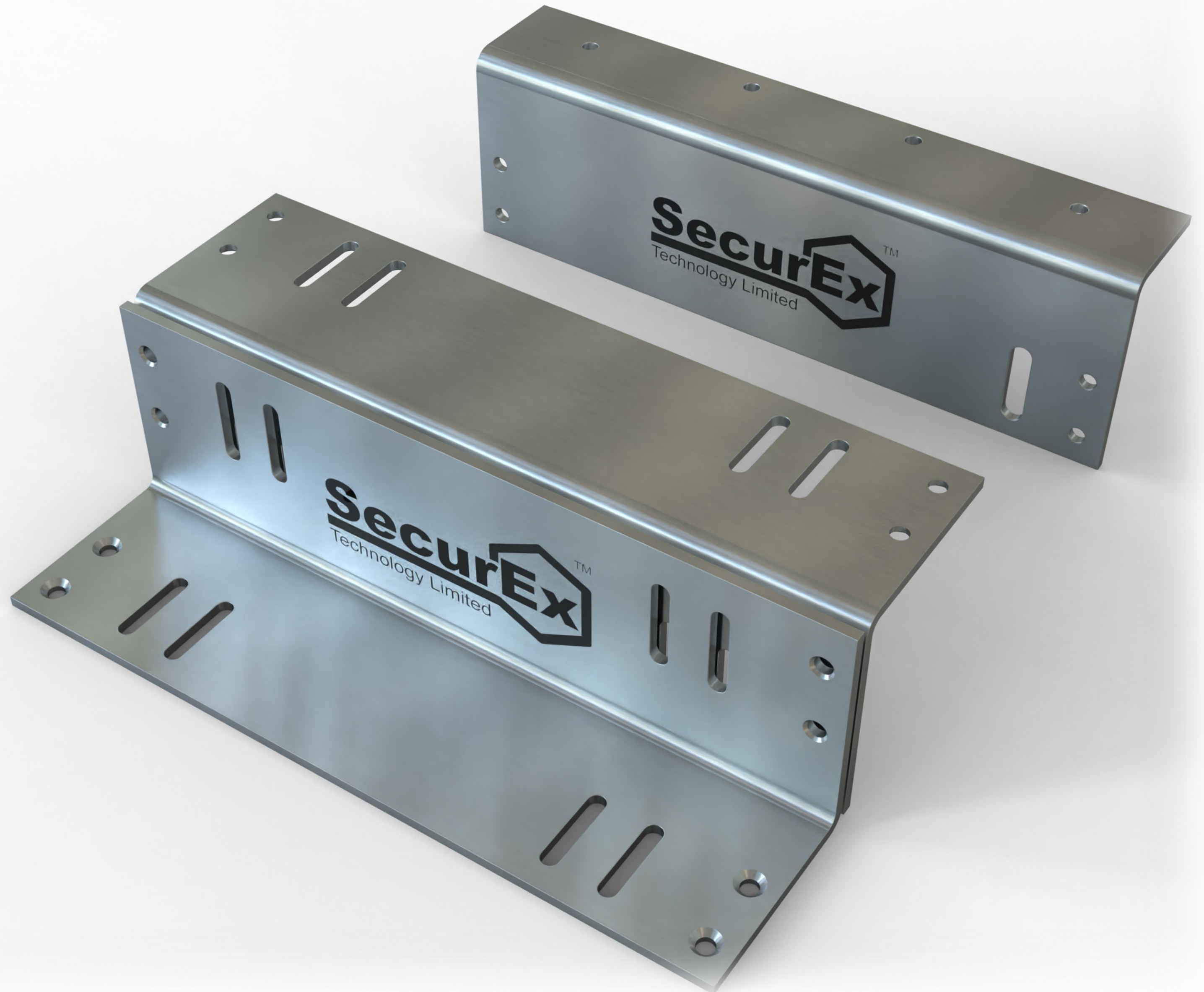
The mounting kit is supplied complete with four standard fixing screws.

Z Bracket Kit - P/N SX-LS-P70201A

Comprises of a 2 part adjustable 304* Stainless Steel Z bracket, which allows either the armature (keeper) plate or the lock itself to be set off of the door or frame. The bracket provides an overall adjustable offset clearance of better than 75mm with the armature fitted.

The mounting kit is supplied complete with four standard fixing screws and with four plate locking nuts and bolts.

*equivalent or greater





SecurEx Technology Ltd
Bedford Park, Barnsley Road
Wath-upon Dearne
S63 6DQ
United Kingdom
T: +44 (0)1709 352301 E: info@securex.technology

